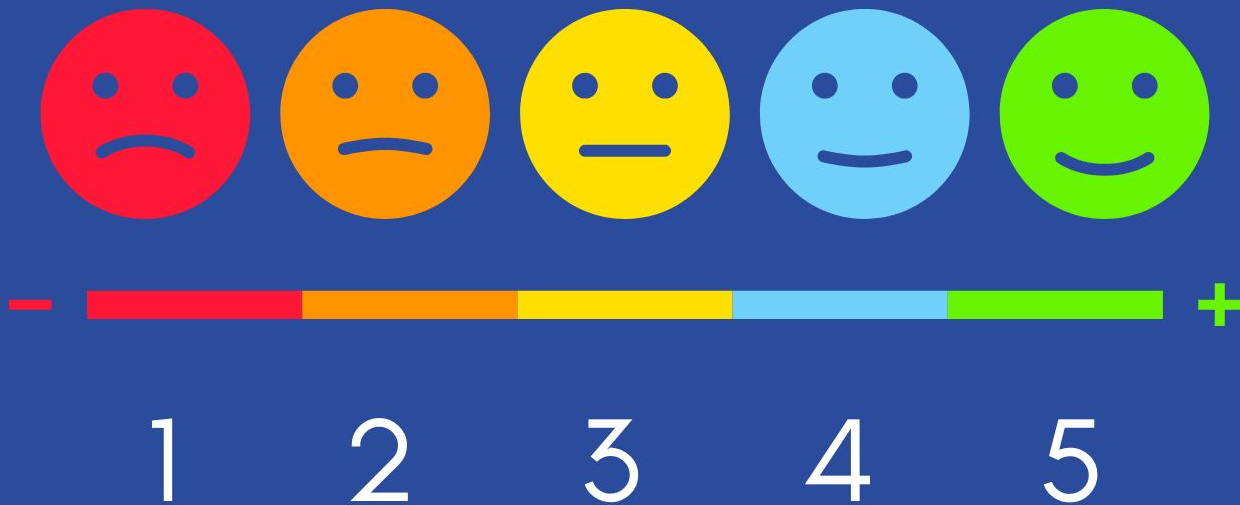


Jewish Disability Awareness, Acceptance & Inclusion Month (JDAIM)



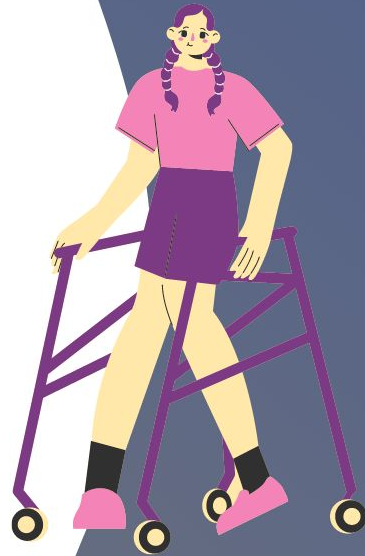
LESSON PLAN K-2

How are you feeling today?

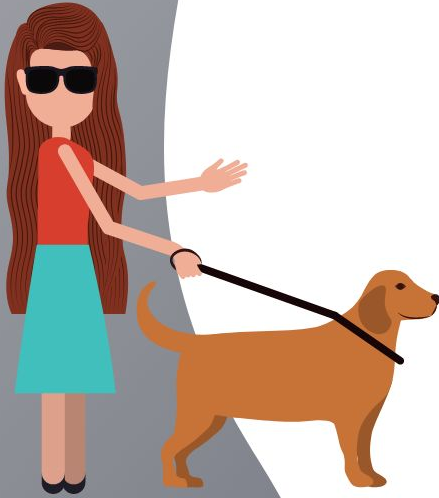


JDAIM stands for:

Jewish
Disability
Awareness, Acceptance &
Inclusion
Month



What is JEWISH about inclusion and accessibility?



"What is hateful to you, do not do to your neighbor"

Babylonian Talmud

Let's Watch



Video Discussion



1. Can you think of some places that are really loud--how would it feel to be there if you are sensitive to noise like Julia?
2. Are there times when things are too loud for you?
3. How would we make things better for people who are sensitive to noise?

Art Activity: Create a Picture

If Julia came to our class, this is how I would welcome her and play with her.



Wrap Up

Share one thing you
learned today about how
we welcome all friends!

